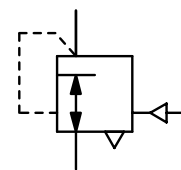


Description	The volume booster amplifies the volume at a 1:1 ratio of pilot pressure to outlet pressure. The pilot pressure has no constant bleed. The bias spring at booster R200 generates a positive shift of the pressure range between pilot pressure and outlet pressure. Booster R201 with great relief capacity is a combination of two R200 boosters. When the output pressure increases above the signal pressure, the diaphragm assembly moves upward to close the supply valve and open the exhaust valve. Excess output pressure exhausts through the exhaust port until it reaches the setpoint.		
Media	compressed air or non-corrosive gases		
Pilot pressure	max. 10 bar, pilot port G $\frac{1}{4}$ at R200; $\frac{1}{4}$ " NPT at R201	Supply pressure	max. 17 bar
Accuracy	at supply pressure variation of 7 bar: < 20 mbar pressure deviation	Response sensitivity	30 mbar
Air consumption	without constant bleed	Relieving function	relieving, optionally non-relieving
Relief capacity	1 800 l/min at 0.3 bar overpressure above setpoint at R200, 9 000 l/min at R201	Mounting position	any
Gauge port	$\frac{1}{4}$ " NPT on both sides of the body		
Temperature range	0 °C to 90 °C / 32 °F to 194 °F, for appropriately conditioned compressed air down to -40 °C / -40 °F		
Material	Body: aluminium die-cast Elastomer: NBR/Buna-N-/Dacron, optionally FKM Inner valve: stainless steel, cadmium-plated steel and brass		



**G1 and G1½, 1½" NPT
30 000 l/min**

Dimensions	K _v -value	Flow rate	Connection thread	Supply pressure	Pressure range	Order number
A B C	(m³/h)	m³/h*1 l/min*1	G	max. bar	bar	
mm mm mm						

Booster w. high volume flow						supply pressure max. 17 bar, relieving, without constant bleed, transmission ratio 1:1			R200
141	198	57	11.4	1680	28000	G1	17	0...10	R200-08I
141	198	57	12.2	1800	30000	G1½	17	0...10	R200-12I

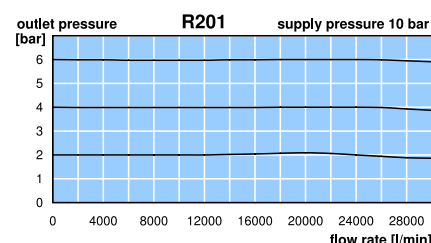
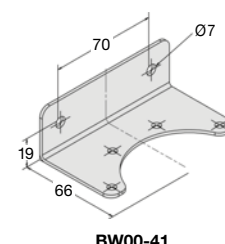
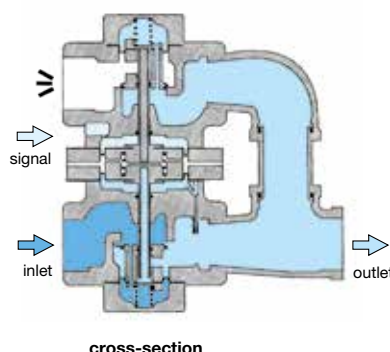
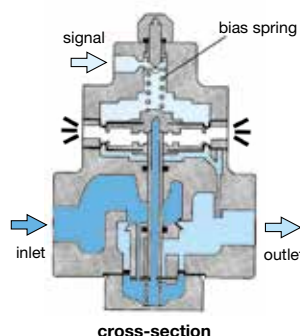
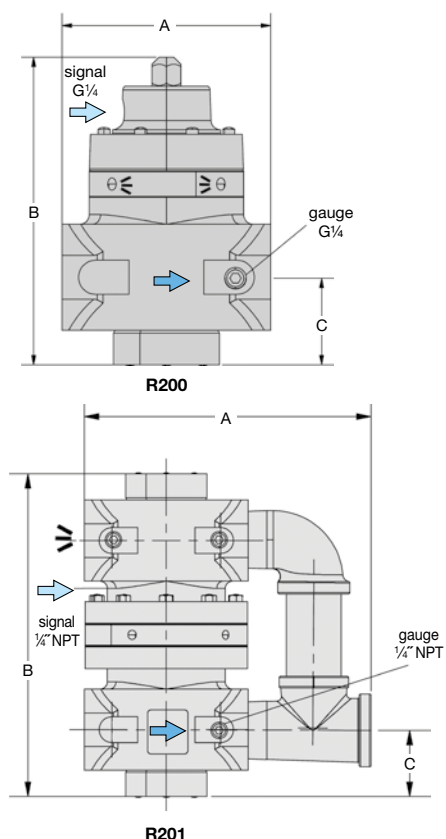
Booster w. high exhaust capacity							supply pressure max. 17 bar, relieving, without constant bleed, transmission ratio 1:1		R201
250	240	57	12.2	1800	30000	1½" NPT	17	0...10	R201-12I

Special options, add the appropriate letter

NPT	connection thread	for R200	R200-...IN
non-relieving	without relieving function	for R200	R200-...IK
tapped exhaust	connection thread G $\frac{3}{8}$	for R200	R200-...IX12
FKM elastomer			R20-...IV

Accessories, enclosed

pressure gauge	Ø 63 mm, 0...*2 bar, G $\frac{1}{4}$	MA6302-...*2
gauge connector	made of brass, adapter $\frac{1}{4}$ " NPT-G $\frac{1}{4}$ female	AM-06
mounting bracket	made of steel	BW00-41



*1 at 10 bar supply pressure and 2.8 bar outlet pressure
*2 02 = 0...2.5 bar, 04 = 0...4 bar, 06 = 0...6 bar, 10 = 0...10 bar, 16 = 0...16 bar

Gauges: see chapter for measuring devices

PDF CAD
www.aircom.net

* Product group



Order example:
R200-08I